

Figure 5-B

A raw (uncalibrated) SMM C/P image (28 Oct 78 16:55) of a rectangular grid pattern, revealing the geometric distortion inherent in the SEC vidicon.

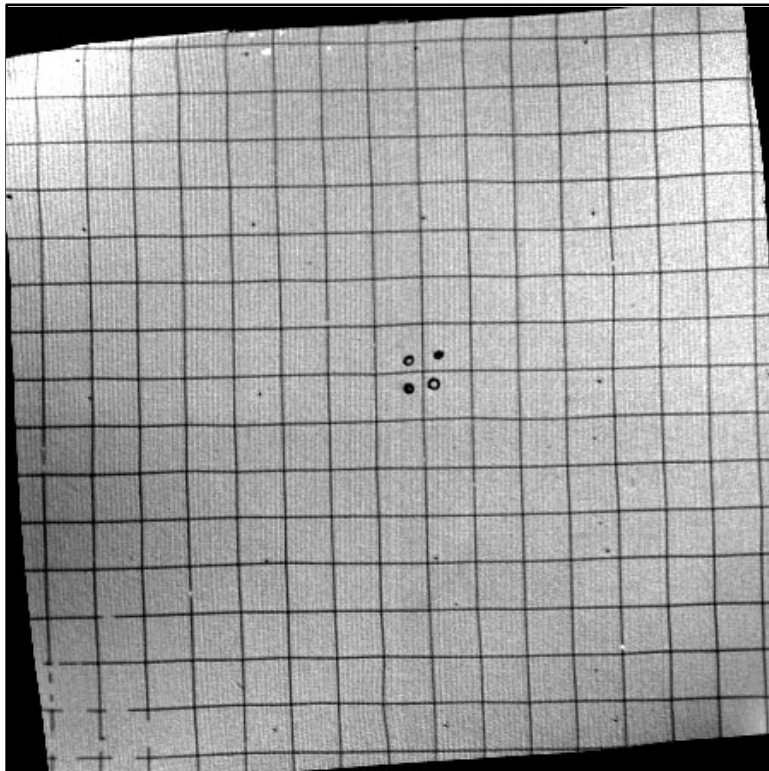


Figure 6-B

A calibrated SMM C/P image (28 Oct 78 16:55) of a rectangular grid pattern, showing correction of the SEC vidicon's geometric distortion.